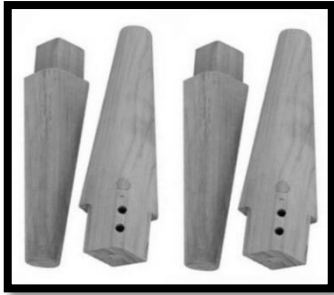


KINGSLEY BATE™

ELEGANT OUTDOOR FURNITURE

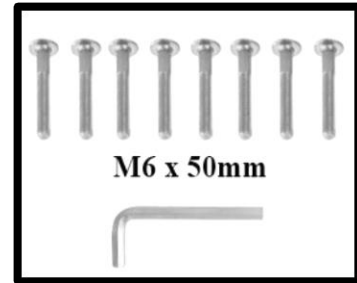
ASSEMBLY INSTRUCTIONS FOR THE LO41



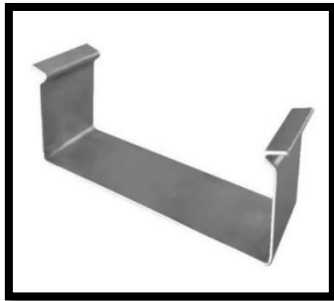
LEGS



TOP



HARDWARE

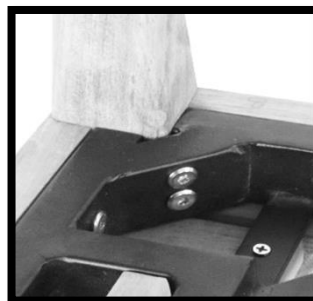
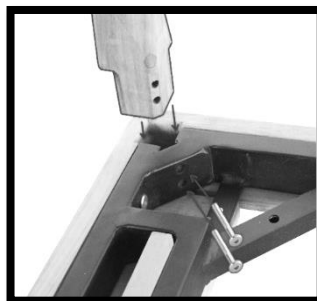


CONNECTOR

STEP-I

Unpack, inspect and lay the parts on a clean, flat, soft surface to avoid marring the Wood.

NOTE: During assembly of the furniture please match joints with the corresponding letters or numbers stamped on wood.



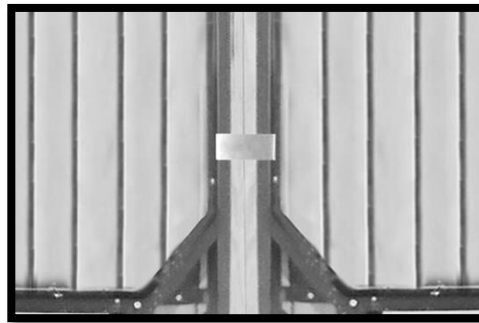
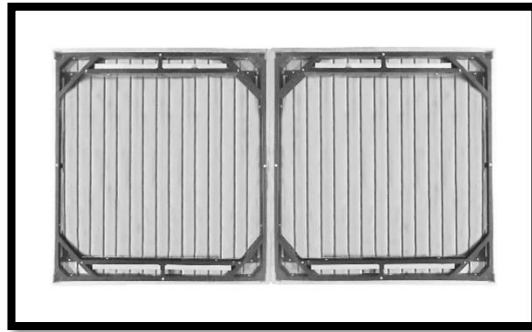
STEP-II

Carefully lay the TOP upside down on your clean surface, insert and attach the legs as shown in the assembly photographs using the M6 x 50mm bolts provided. You may need to wiggle the legs as you finish tightening the bolts to make sure they are fully secured.

NOTE: DO NOT USE POWER TOOLS AS IT MAY DAMAGE THE ITEM.

STEP-IV

If you are connecting multiple sectional items together the photographs below illustrate where to attach them. **DO NOT ATTACH THEM WHILE ITEM IS UPSIDE DOWN AS YOU WILL NOT BE ABLE TO UPRIGHT THE ASSEMBLY.**



IF YOU HAVE ANY QUESTIONS REGARDING THE ASSEMBLY OF YOUR KINGSLEY BATE FURNITURE, PLEASE CONTACT KINGSLEY BATE CUSTOMER SERVICE AT 703-361-7000. WE THANK YOU FOR CHOOSING OUR FURNITURE.

** KINGSLEY BATE WILL NOT TAKE RESPONSIBILITY FOR DAMAGE
IF THESE INSTRUCTIONS ARE NOT FOLLOWED PROPERLY*

7200 Gateway Court, Manassas, Virginia 20109
Phone: 703-361-7000, Fax: 703-361-7001