

- We recommend two people be on hand for this assembly

Tools required:

- 4mm hex key (included)
- Wood block (included)

# QUBE ALU LOUNGE CHAIR

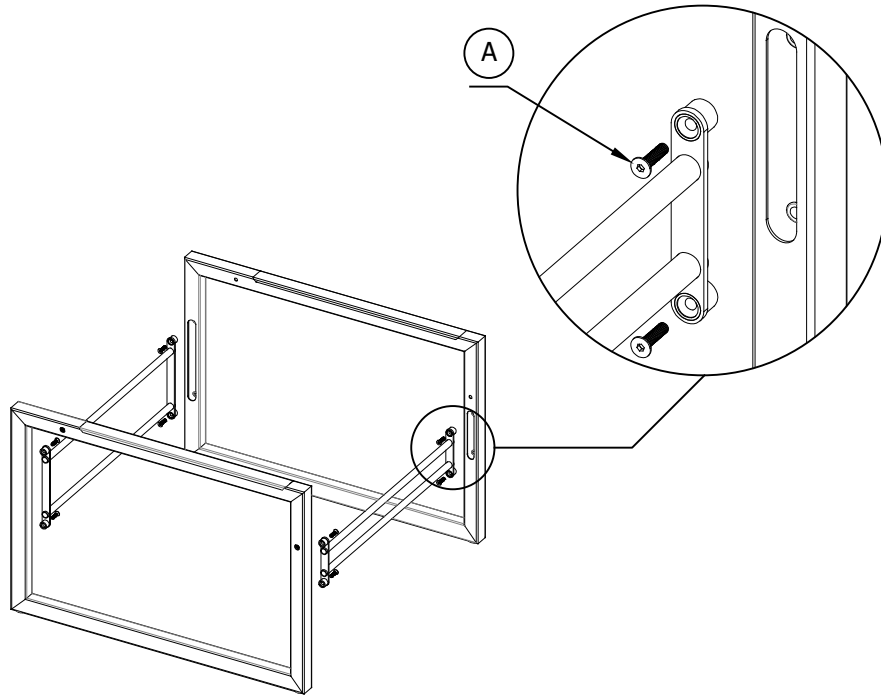
ASSEMBLY INSTRUCTIONS

**!! Important**  
Do not use power tools on this assembly.  
Use the supplied manual hex key.



- 1 Secure the two stainless steel rail assemblies in place using the supplied allen key and 8 pcs M6x25mm bolts.

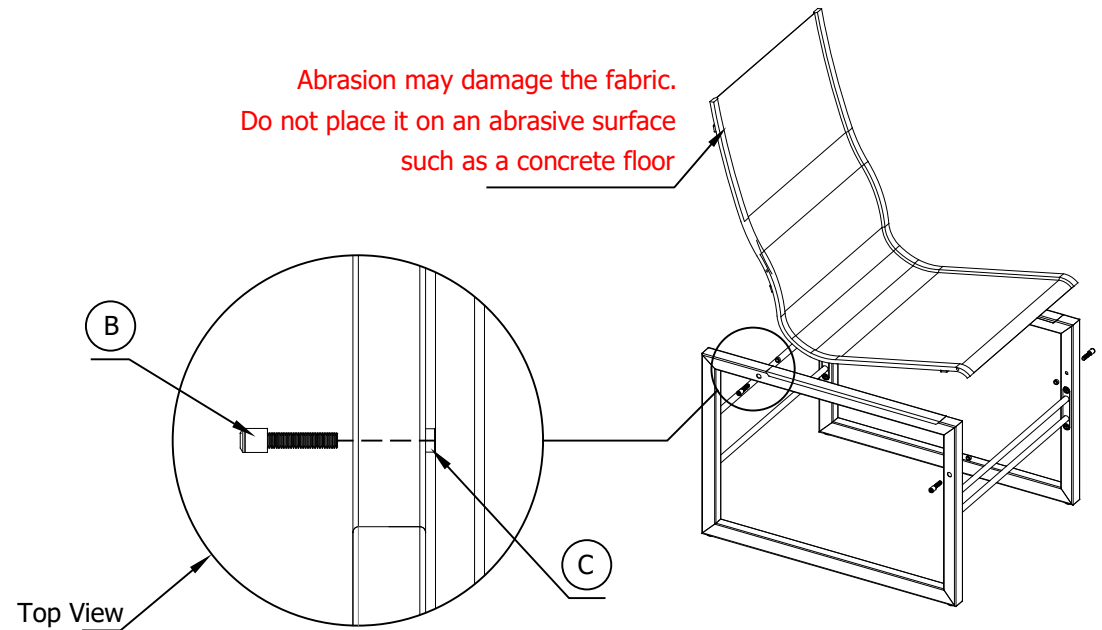
- Do not fully tighten the bolts, instead secure them loosely in place with two turns only.



- 2 a. Line the seat/back assembly up with the 4 upper holes in the frames, then use the M8x50mm bolts fitted with the spacer ring to secure them loosely in place (two turns only).

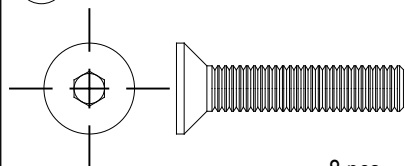
b. Tighten the 8 pcs M6x25mm bolts fully, followed by tightening the 4 pcs M8x50mm bolts.

Abrasion may damage the fabric.  
Do not place it on an abrasive surface  
such as a concrete floor



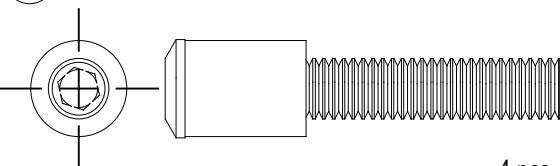
- 3 Check the levelness of the assembled chair on a flat surface. If the frame is not completely level, then place the supplied wood block under one of the two legs that is in contact with the floor and gently push down on opposite two legs.

A BOLT M6x30mm



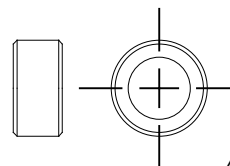
8 pcs

B SPECIAL BOLT M8x50mm



4 pcs

C SPACER RING



4 pcs