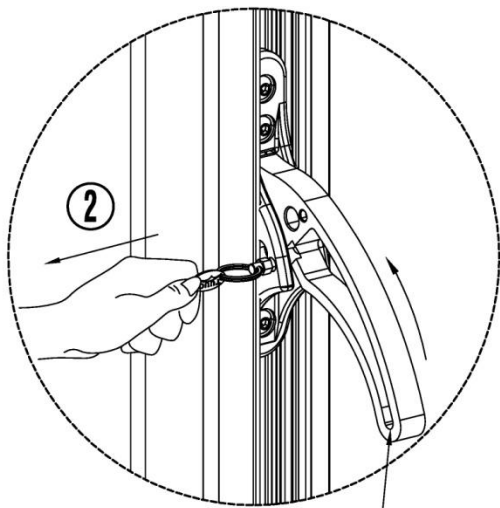


OPERATING INSTRUCTIONS

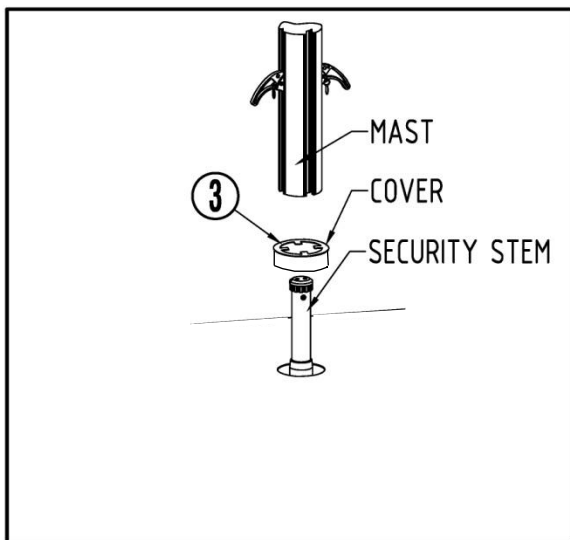
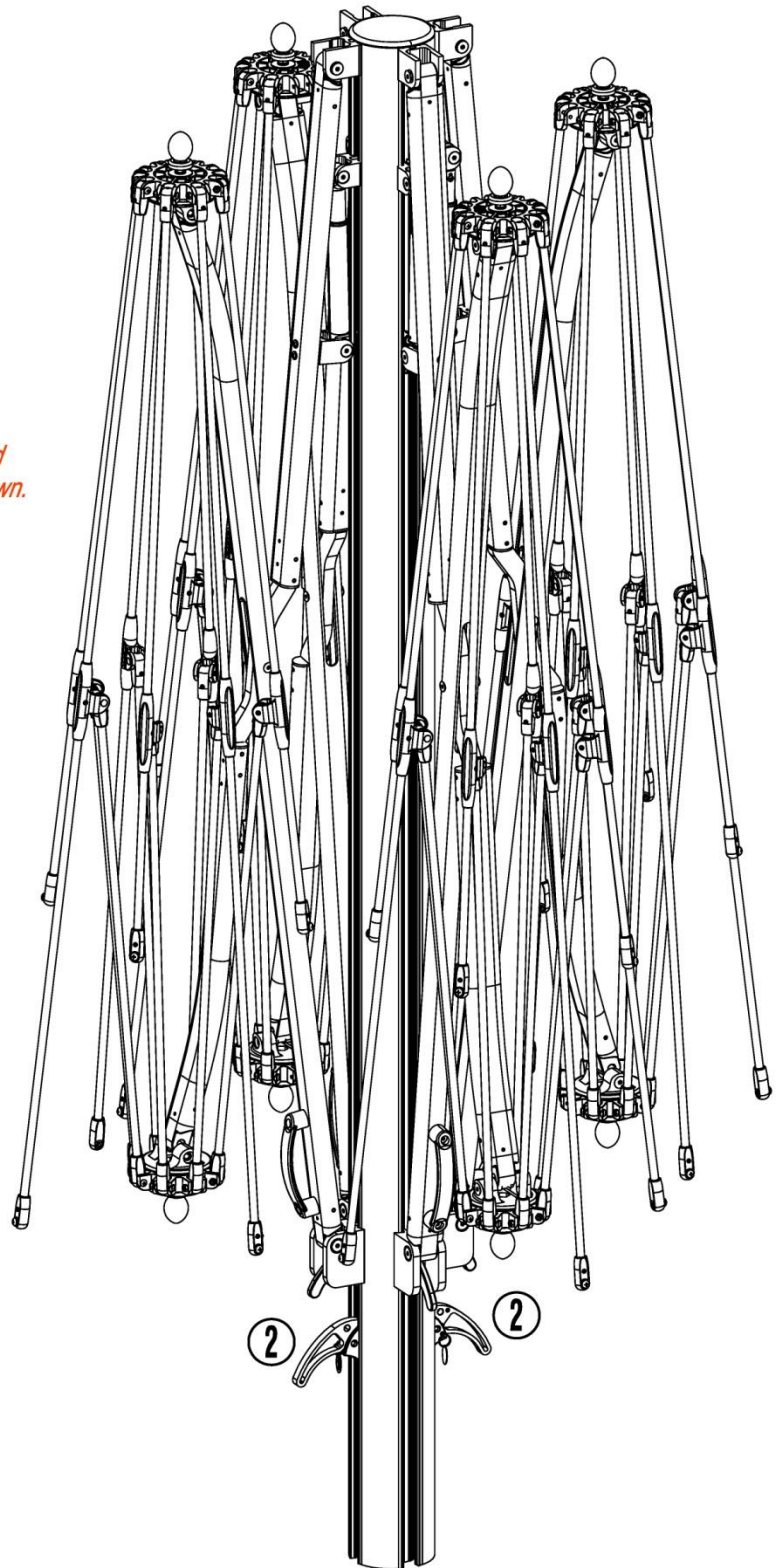
SHADE POD 16.5' SQUARE

1. Remove all packaging from the cantilever
Including inside the cantilever.
2. Pull pin to unlock two cam lock handles. Make
sure two cam lock handles are open per
drawing shown.
3. Insert cover on to mast.
place cantilever in SECURITY STEM
4. Push two cam lock handles (per drawing shown)
until engaged in the proper gear slot with the
cam lock handle in the downward position.

** To rotate umbrella: Pull pin to unlock two cam lock handles and
turn umbrella to desired location. Lock two cam lock handles down.*



CAM LOCK HANDLE



global headquarters

2900 NW 35th Street
Miami, FL 33142 USA

t 305.634.5116
f 305.634.5119

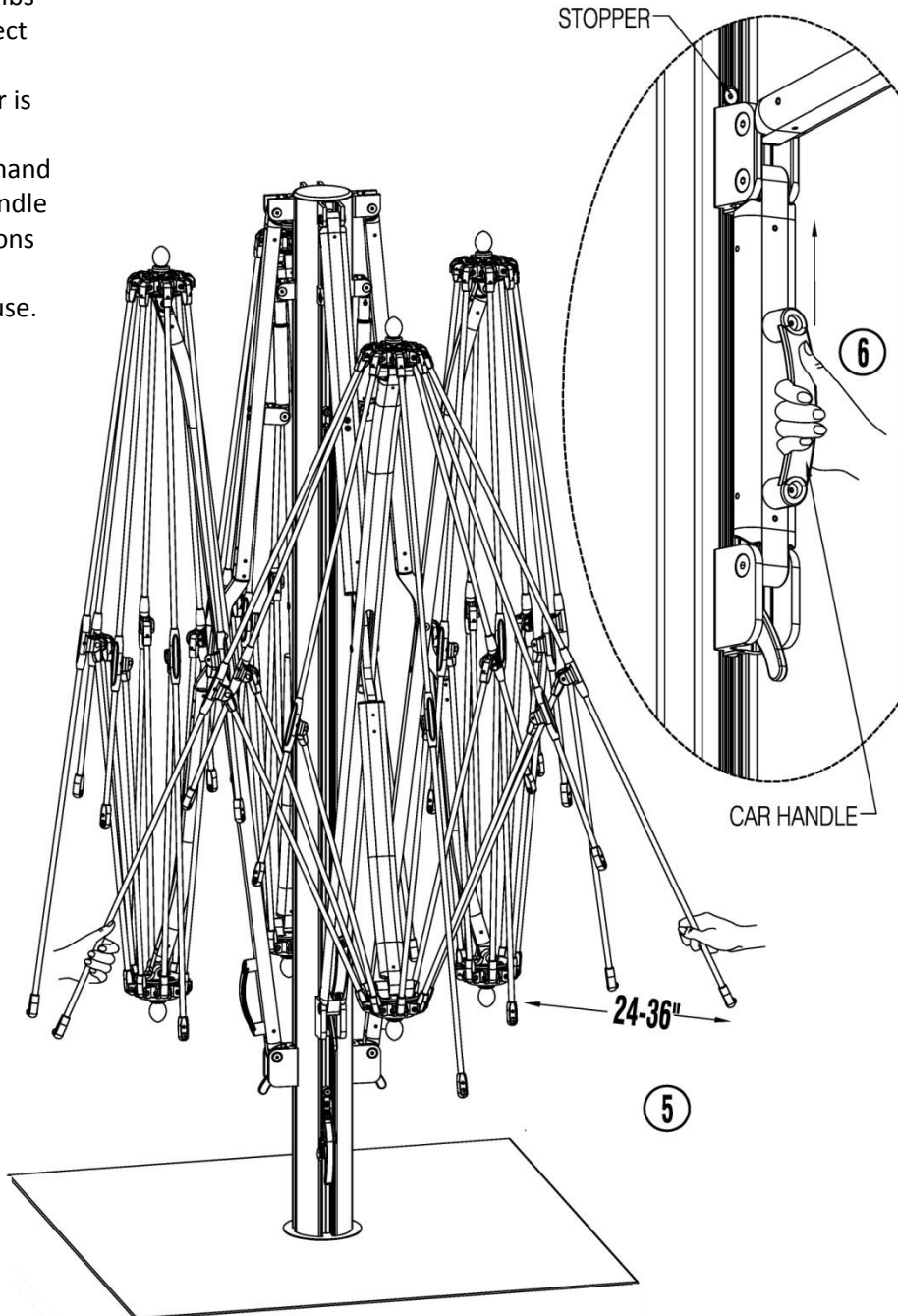
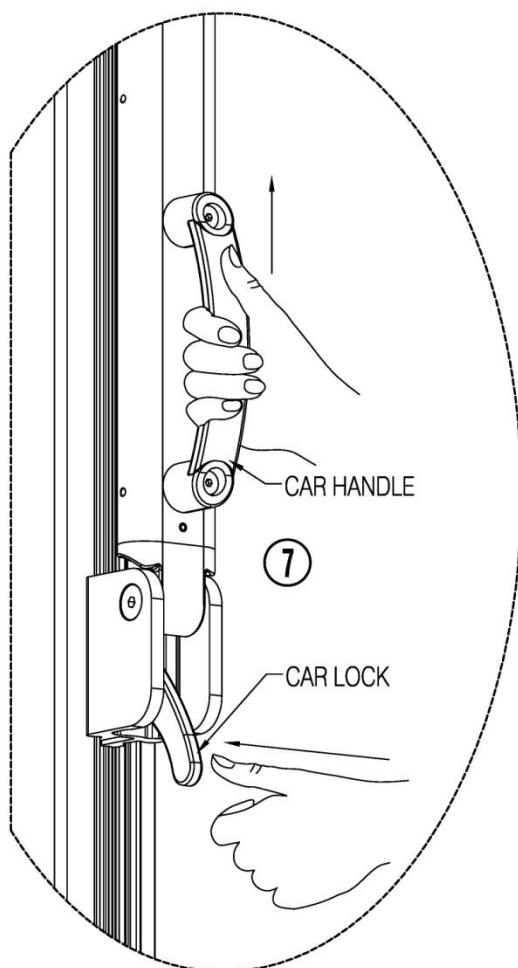
info@tuuci.com
www.tuuci.com

TUUCI
made in miami

OPERATING INSTRUCTIONS

SHADE POD 16.5' SQUARE

5. Gently separate EACH RIB INDIVIDUALLY from center hub, approx. 24-36" / 60-90 cm. If ribs does not move easily, DO NOT force. Inspect product for additional packaging.
6. Push up Car Handle to stopper until the car is locked as per drawing shown.
7. To close umbrella, push up Car Handle by hand then push down Car Lock and slide Car Handle down. Close umbrella during wind conditions that exceed manufacturer's specifications. Close umbrella with tie back when not in use.



global headquarters

2900 NW 35th Street
Miami, FL 33142 USA

t 305.634.5116
f 305.634.5119

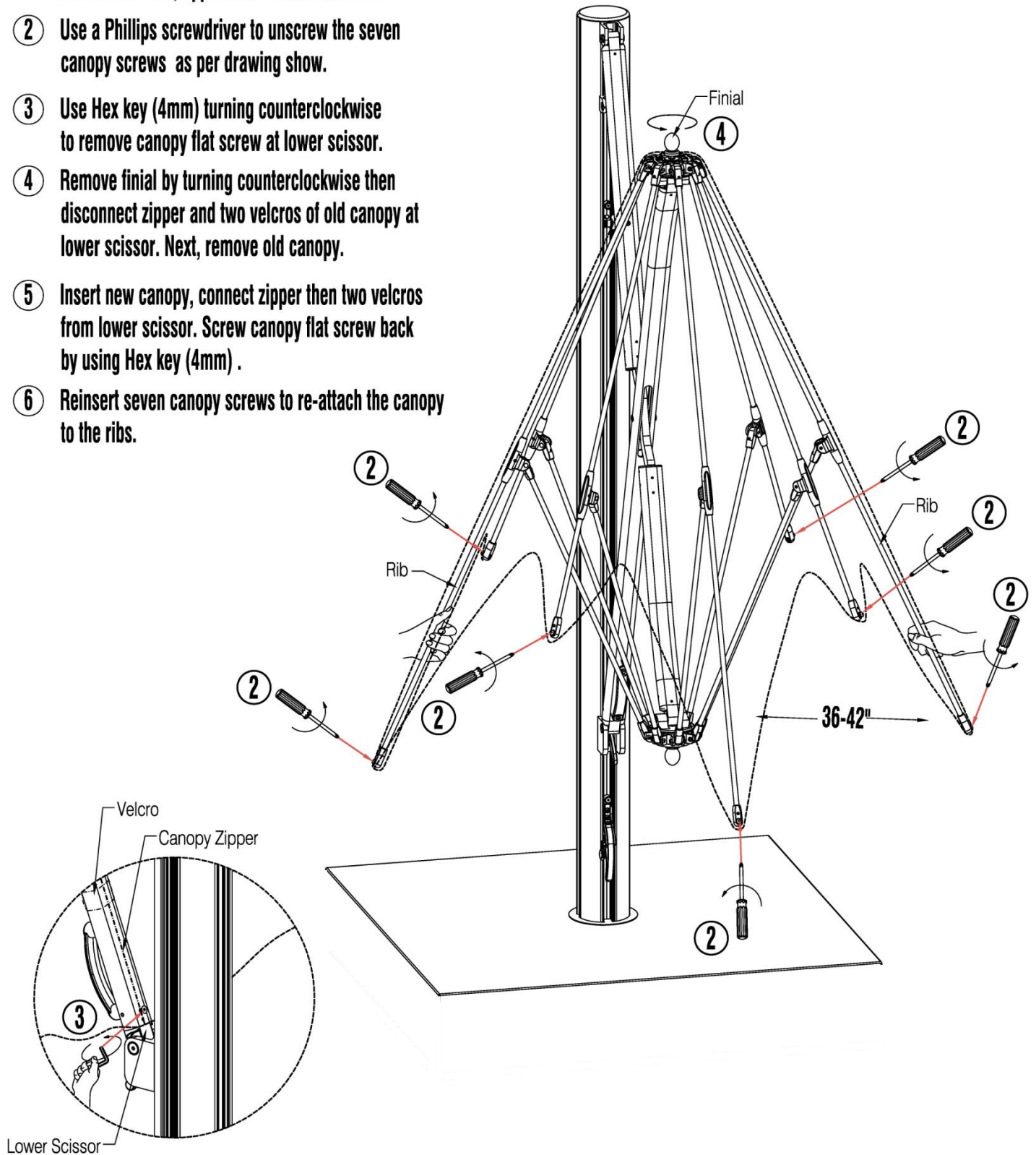
info@tuuci.com
www.tuuci.com

TUUCI
made in miami

REPLACEMENT INSTRUCTIONS

SHADE POD 16.5' SQUARE

- ① Gently separate EACH RIB INDIVIDUALLY from center hub, approx. 36"-42"/60-107Cm.
- ② Use a Phillips screwdriver to unscrew the seven canopy screws as per drawing show.
- ③ Use Hex key (4mm) turning counterclockwise to remove canopy flat screw at lower scissor.
- ④ Remove finial by turning counterclockwise then disconnect zipper and two velcros of old canopy at lower scissor. Next, remove old canopy.
- ⑤ Insert new canopy, connect zipper then two velcros from lower scissor. Screw canopy flat screw back by using Hex key (4mm).
- ⑥ Reinsert seven canopy screws to re-attach the canopy to the ribs.



global headquarters

2900 NW 35th Street
Miami, FL 33142 USA

t 305.634.5116
f 305.634.5119

info@tuuci.com
www.tuuci.com

TUUCI[®]
made in miami